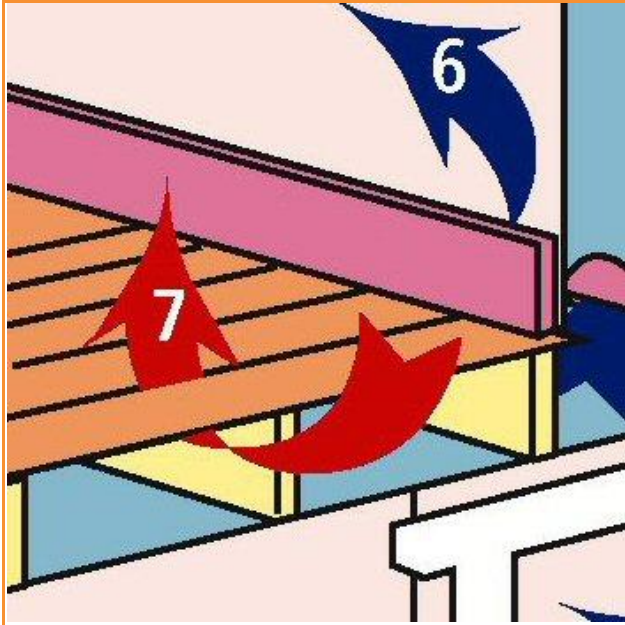




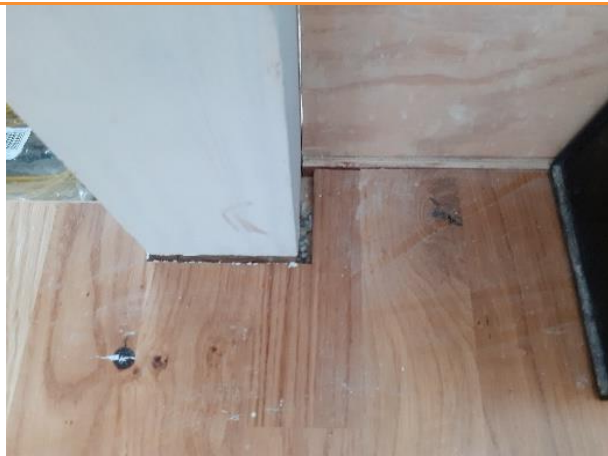
Common Leakage Sites no.7

Between sections of suspended floors, usually timber.



In this instance air is leaking from an unheated floor void into the room where the floorboards are suspended and have not been sealed.

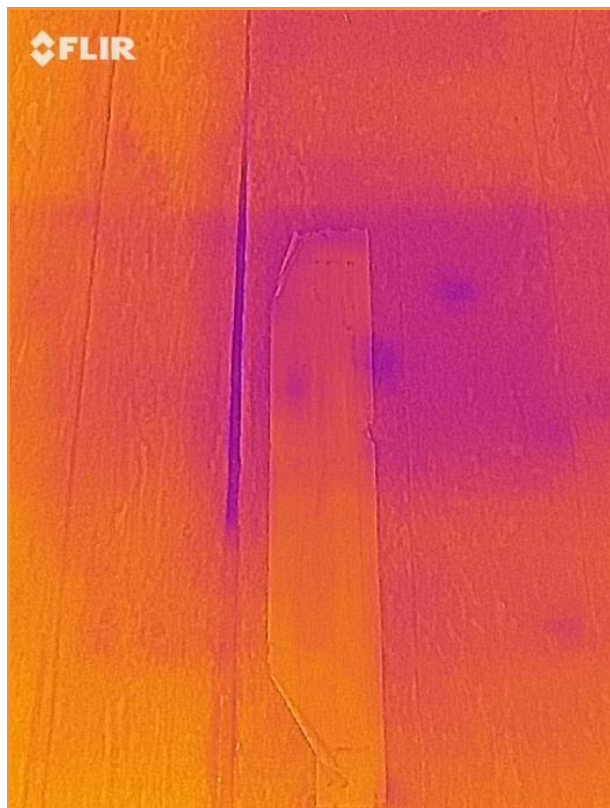
Building Fabric Leakage 7: Between sections of suspended floors, usually timber. Also through hollow intermediate floors.



7.01: Leakage found around the base of a bannister post through the intermediate floor of an existing flat whilst it was depressurised



7.02: Leakage found at the side of the lowest step of internal stairs in an existing flat whilst it was depressurised



7.03: Internal thermographic image whilst building depressurised, showing substantial leakage through larger gaps between floorboards, subsequently much reduced when floor resealed
