



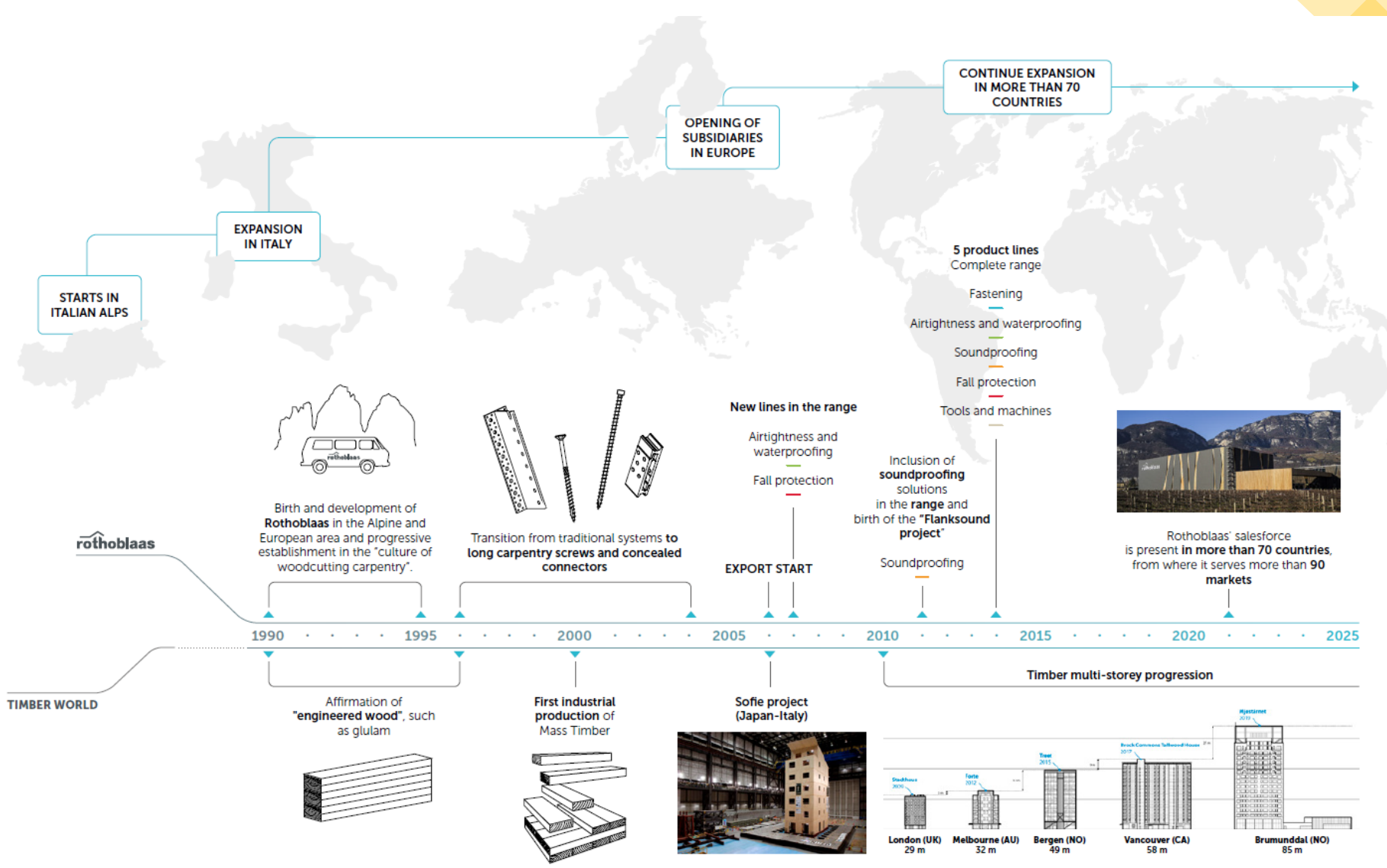
**rothoblaas**

Airtightness & Wind tightness

4th OCT 2022

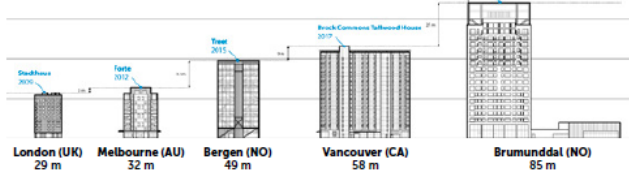
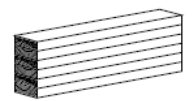
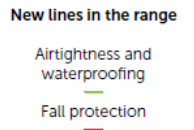
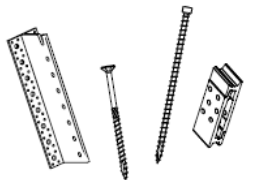
Peter Theobald

Peter.the@rothoblaas.com



rothoblaas

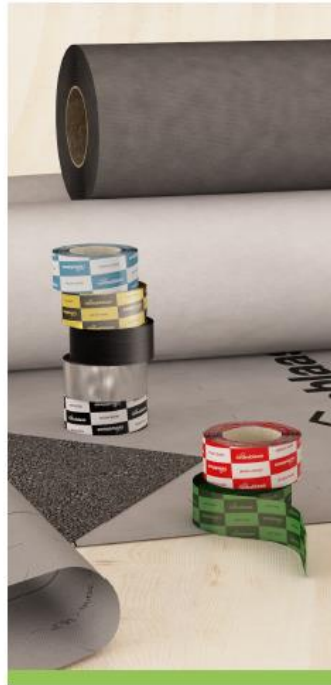
TIMBER WORLD



OUR PRODUCT LINES

FASTENING

FULL RANGE OF SCREWS,
PLATES AND CONNECTORS



SOUNDPROOFING

SOUNDPROOFING PROFILES AND
SOUND-REDUCING MEMBRANES



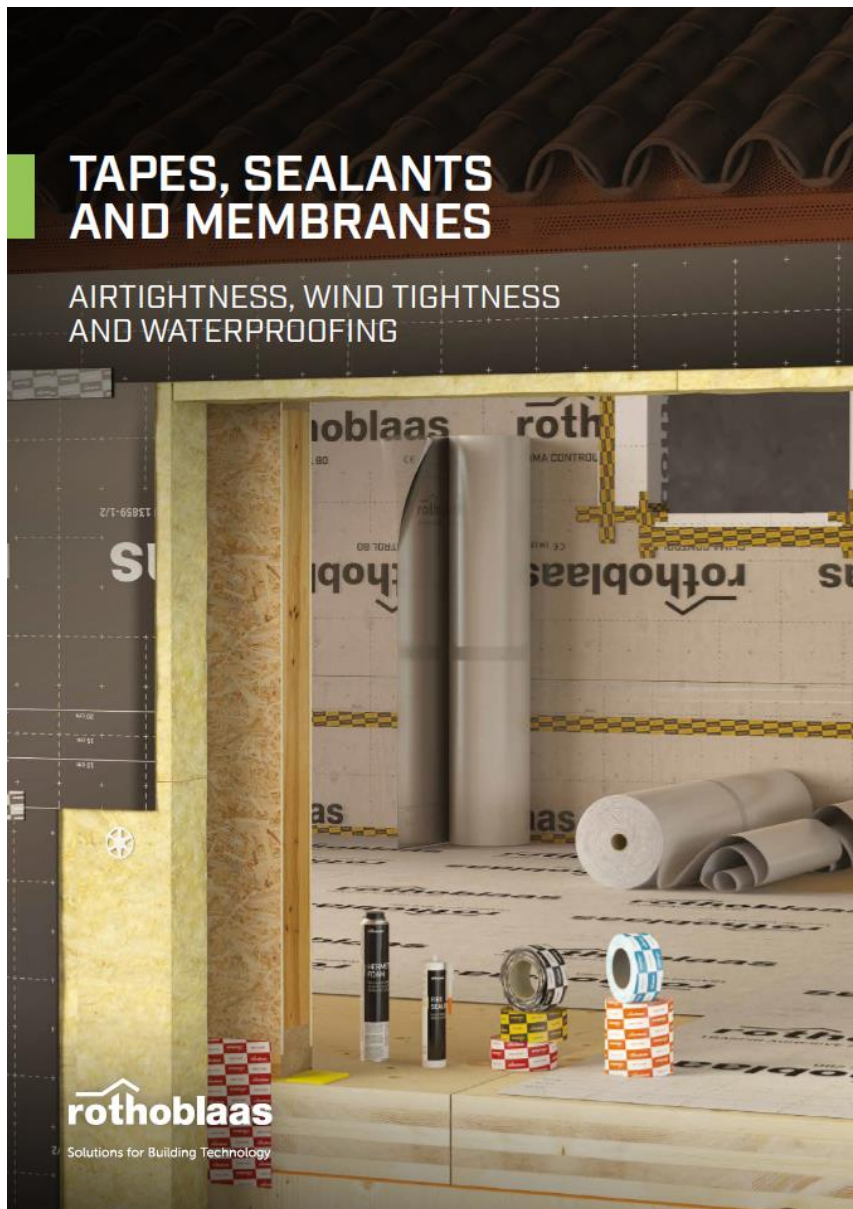
TOOLS AND MACHINES

MACHINERY AND ACCESSORIES FOR
WOODWORKING AND TIMBER
MAINTENANCE



FALL PROTECTION

ACCESS, TRANSIT AND SAFETY
SOLUTIONS FOR
WORKING AT HEIGHT



TAPES AND SEALANTS

CONNECTION TO THE GROUND

ACRYLIC TAPES

EXPANDING TAPES

SEALANTS

GLUES



ROOF AND VENTILATION ELEMENTS

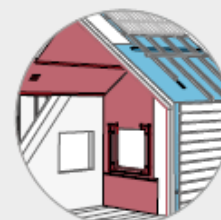
MEMBRANES

BARRIERS AND STOPS

BREATHABLE

BITUMINOUS

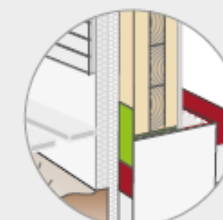
AIR AND WIND TIGHTNESS



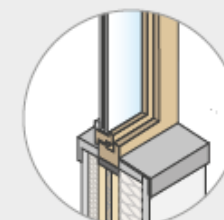
STRUCTURES AND FIRE BEHAVIOUR



CONNECTION TO THE GROUND



DOORS, WINDOWS AND STRUCTURE



CLIMA CONTROL 80

MEMBRANE WITH VARIABLE DIFFUSION

Vapour check polyamide (PA) film with polypropylene (PP) reinforcing layer.

dimensions (H x L) : 1,5 x 50 m

- ① top layer: vapour check PA film
- ② bottom layer: non-woven PP fabric



SEAL BAND

SINGLE-SIDED TAPE FOR INDOOR USE.

Hydrorepellant impregnated paper support, acrylic glue and separation layer.



SPEEDY BAND

UNIVERSAL SINGLE-SIDED TAPE WITHOUT SEPARATION LAYER.

Polyethylene (PE) support with acrylic glue and reinforcing grid.



FLEXI BAND

UNIVERSAL SINGLE-SIDED HIGH-ADHESIVE TAPE.

Polyethylene (PE) support with acrylic glue, reinforcing grid and separation layer.



ROLLER

Pressure rollers.



PRIMER/PRIMER SPRAY

Universal foundations for acrylic adhesive tapes.



CERTIFIED COMPONENT

Passive House Institute

CERTIFICATIONS



PASSIVE HOUSE

The Passive House Institute, an independent research organisation that has set an internationally recognised standard for energy efficiency in construction, submits tapes and membranes to extremely rigorous tests to prove their effectiveness in terms of performance. Tests are carried out under boundary conditions that reflect reality as closely as possible in order to ensure that the product retains its functionality once installed. In the case of membranes, in particular, overlaps with other adjacent materials are observed.

CLIMA CONTROL 80, FLEXI BAND, SPEEDY BAND, SEAL BAND



SINTEF

The Norwegian SINTEF certification is awarded to waterproofing solutions that successfully pass certain installation and ageing tests: effectiveness, durability and sustainability of the materials are just some of the areas of investigation explored by this independent certification body.

TRASPIR 110, FLEXI BAND



CSTB

The French CSTB (Centre Scientifique et Technique du Bâtiment) issues certificates of conformity known as 'Avis Technique', which declare that the requirements imposed by French market regulations for building materials are met. With regard to 'Ecrans de Sous-Toiture', i.e. waterproofing underlays for roofs, the parameters considered are resistance to the passage of water (E), permeability to water vapour (S) and mechanical resistance of the membrane (T).

TRASPIR 110, TRASPIR 150, TRASPIR NET 160



BBA

BBA (British Board of Agrément) is the independent body that certifies that products and systems conform to British standards after subjecting candidate products to rigorous testing. Specifically, our membranes have been evaluated taking into account various parameters: weather tightness, risk of condensation, resistance to wind loads, strength of the membrane itself and its durability.

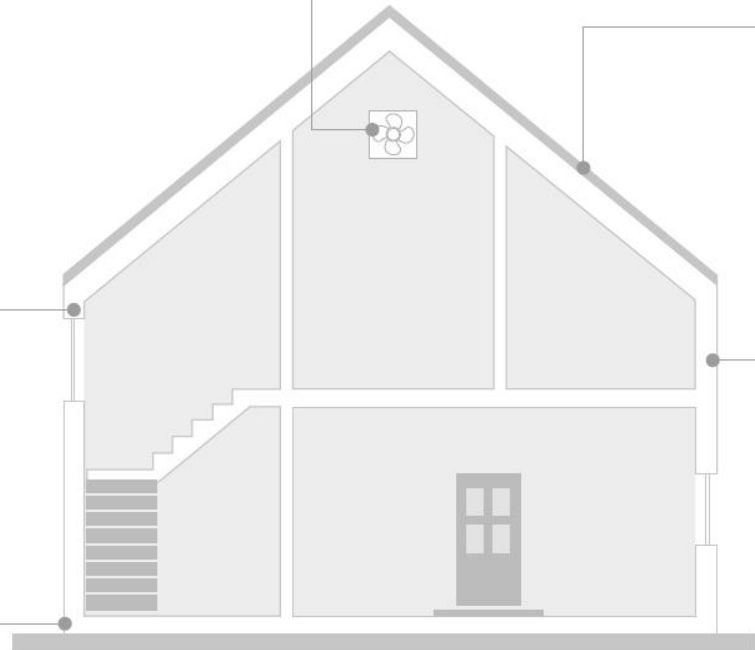
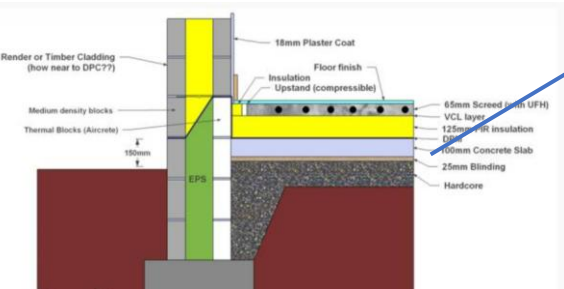
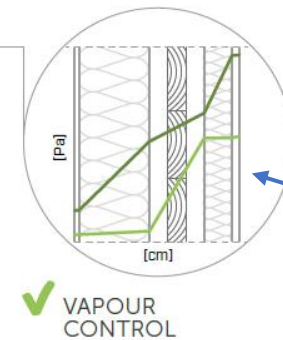
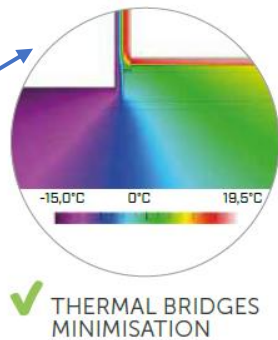
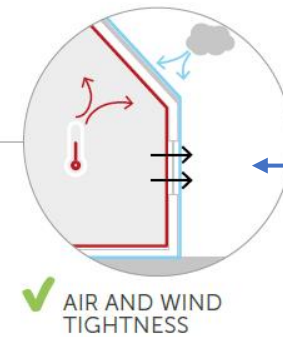
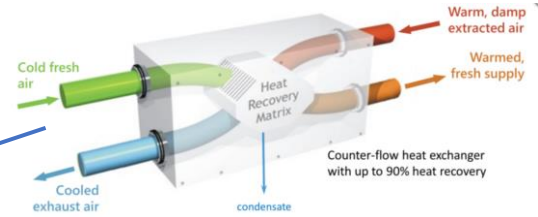
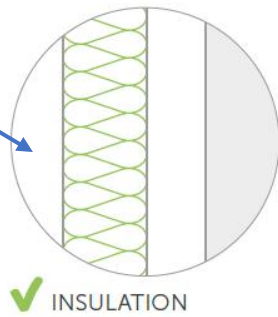
TRASPIR 85, TRASPIR 135, TRASPIR 150

Rothoblaas has a full range of certifications to national standards across the world. Including EPD's and LCA's on our products

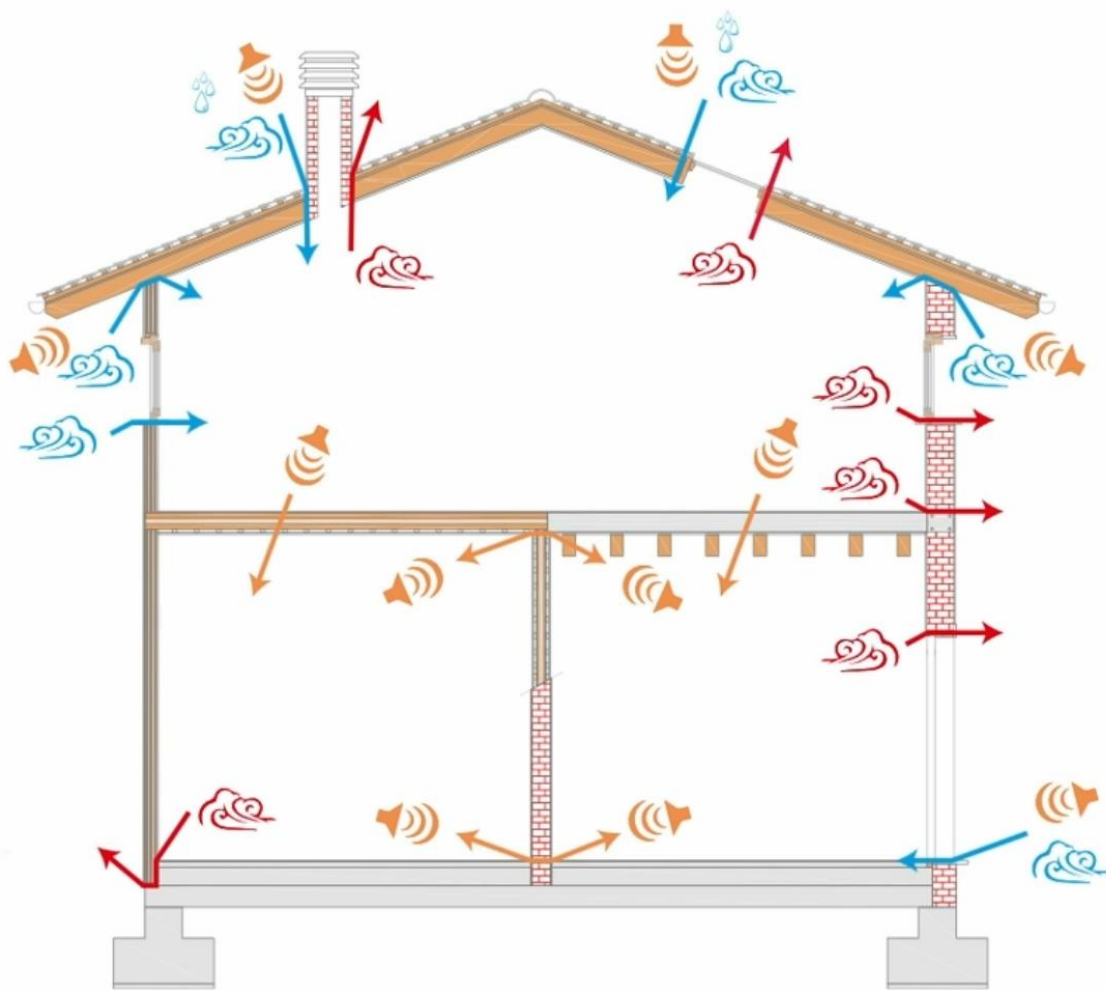


Ensuring the envelope of a building adds comfort for the users

To ensure excellent housing comfort and superior performance, a building must meet very strict energy criteria, which can only be achieved through careful design of all construction details.



❑ AIRTIGHTNESS OF THE BUILDING



➤ AIR

➤ VAPOUR

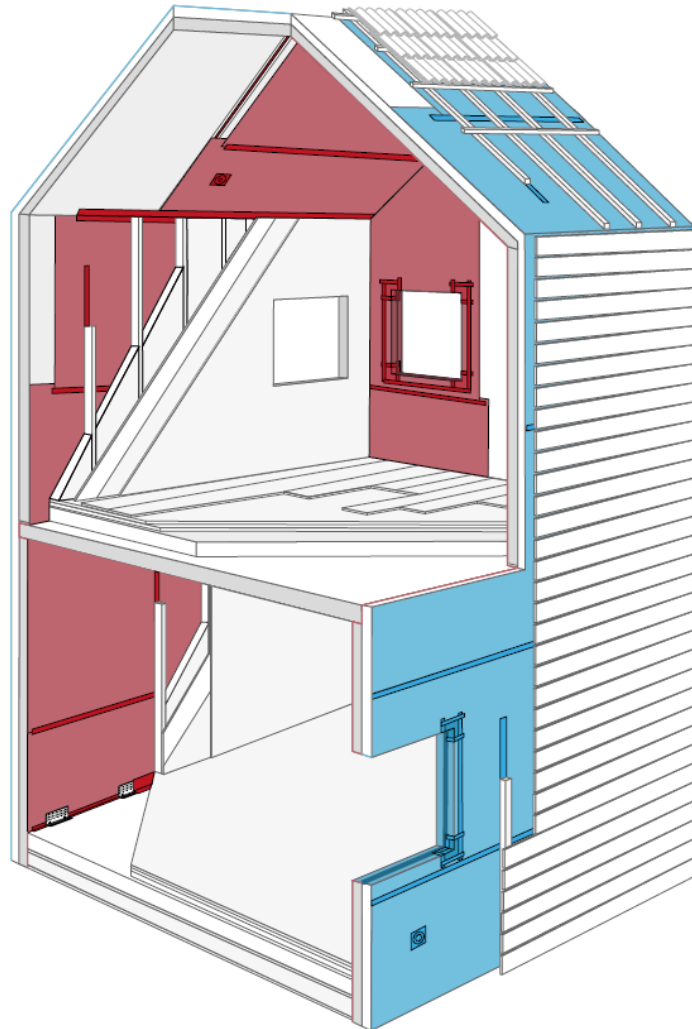
➤ HEAT

➤ NOISE

Why do we specify membranes, tapes and sealings in building?

AIRTIGHTNESS

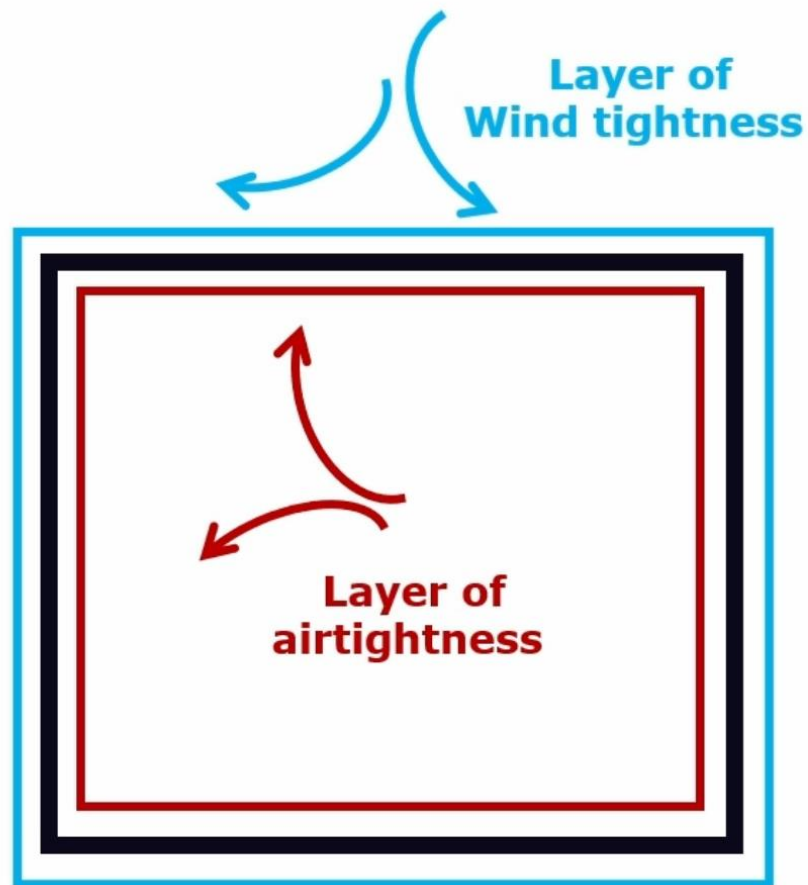
- ✓ Prevents heat loss in winter
- ✓ Prevents the entry of hot, humid air in summer
- ✓ Optimises the operation of controlled mechanical ventilation
- ✓ Prevents the uncontrolled passage of warm, moist air and the consequent risk of interstitial condensation
- ✓ Avoids discomfort due to draughts
- ✓ Improves acoustic comfort



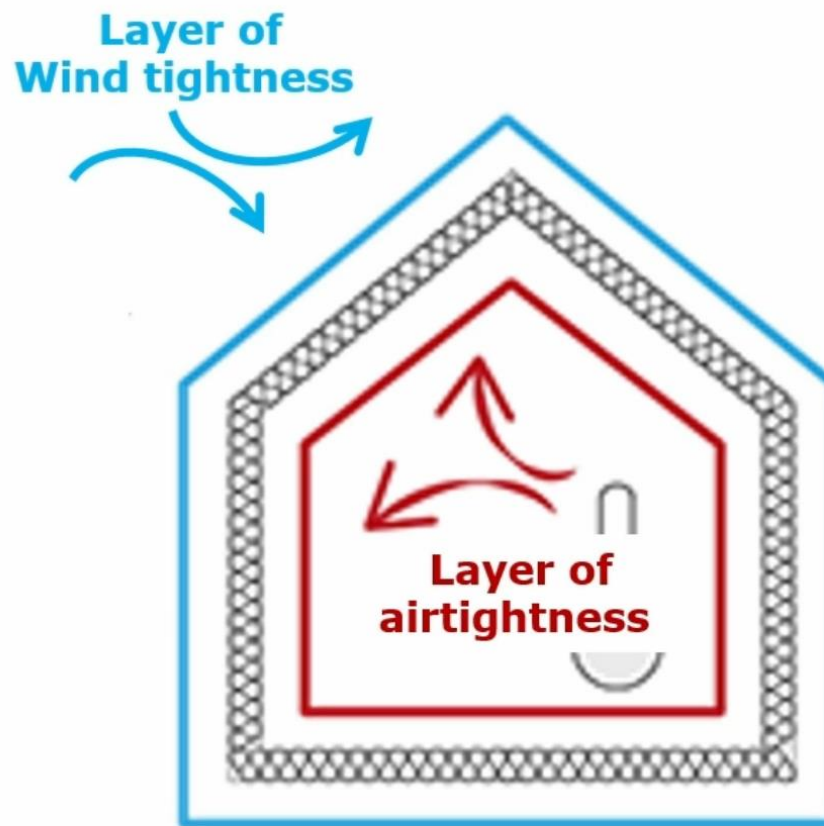
WIND TIGHTNESS

- ✓ Ensures the thermal efficiency of the insulation layer
- ✓ Protects the casing and improves the durability of materials
- ✓ Avoids the formation of currents and convective motions within the casing
- ✓ Serves as a temporary protective layer during construction phases
- ✓ Acts as a temporary protective layer in the event of cracks and dislocation of the roof layer or façade cladding

❑ AIR AND WIND TIGHTNESS LAYER



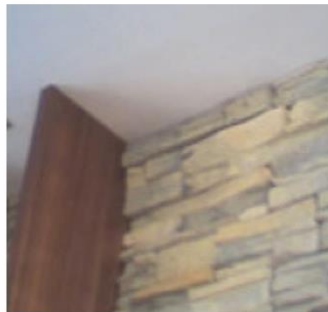
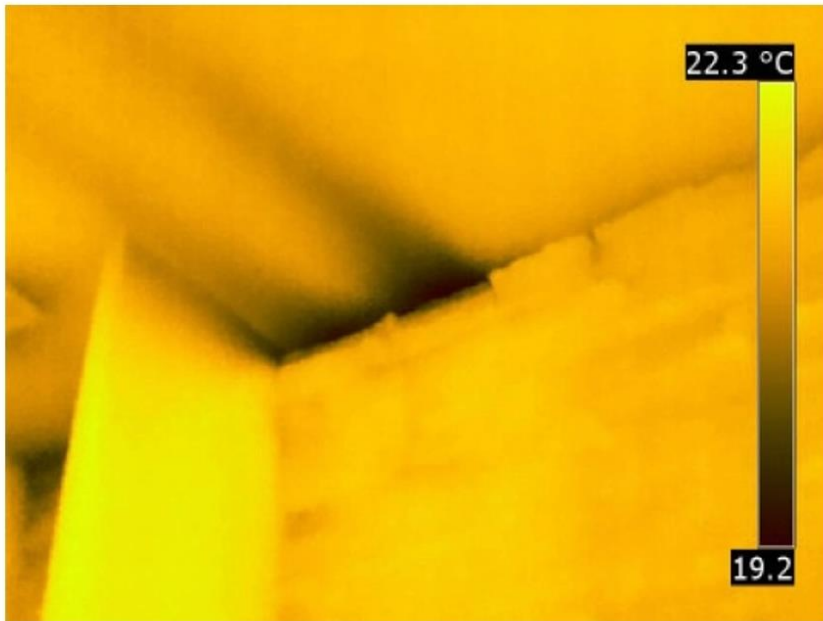
Building plan



Building section

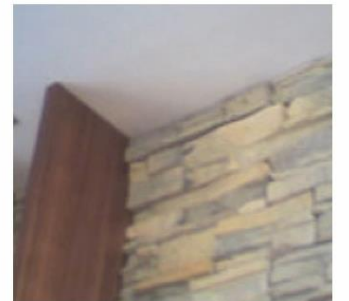
❑ AIR-TIGHTNESS

THERMAL CAMERA



❑ AIRTIGHTNESS

ANEMOMETER



FRAME BAND

SELF-EXPANDING SEALING TAPE FOR WINDOWS/DOORS

HERMETIC

Airtight and watertight, it interrupts possible acoustic bridges in the structure-window joint.

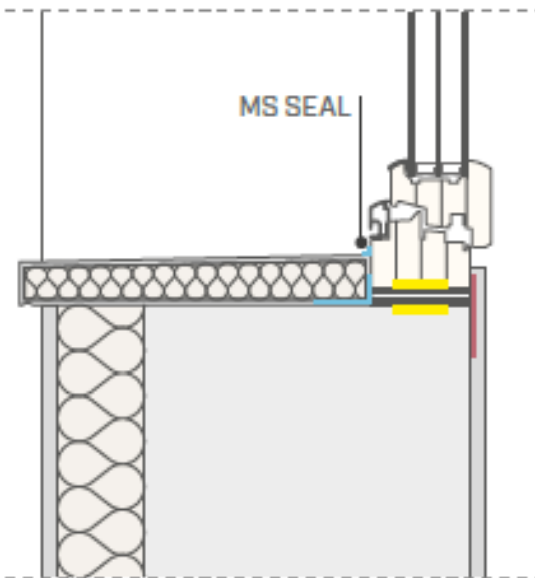
PRACTICAL

Thanks to the adhesive strip, application is easy and precise without the need for further glue.



TECHNICAL DATA

Properties	standard	value	USC conversion
Classification	DIN 18542	BG 1	-
Air permeability (a)	EN 12114	0 m ³ /(h·m·(daPa) ⁿ)	-
Thermal conductivity (λ)	EN 12667	≤ 0,048 W/(m·K)	0,028 BTU/h·ft ² ·°F
Water vapour transmission (Sd)	EN ISO 12572	indoor: 25 m outdoor: 0,5 m	-
Resistance to heavy rain	EN 1027	≥ 1050 Pa	-



EXPAND BAND
WINDOW BAND
FRAME BAND
EASY FOAM
HERMETIC FOAM
FIRE FOAM

SMART BAND
START BAND
PROTECT
BYTUM BAND
SOLID BAND
MANICA PLASTER
TERRA BAND
ALU BUTYLBAND



FLUID MEMBRANE

SYNTHETIC SEALING MEMBRANE FOR BRUSH AND SPRAY APPLICATION

FLEXIBLE

The synthetic resin mix is elastic and resistant to any movement of the sealed cracks.

FAST INSTALLATION

It can be applied using a roller, brush or spray with the possibility of inserting a synthetic reinforcing fabric. Removable with hot water.

FIELDS OF APPLICATION



TECHNICAL DATA

Properties	standard	value	USC conversion
Colour	-	grey	-
Classification	EN 1504-2	PI-MC-IR ⁽¹⁾	-
	EN 14891	DM 01 ⁽²⁾	-
Density at 20 °C	ISO 2811-1	1.45 kg/L	232,52 oz/gal
Surface cross-linking time 23 °C / 50% RH	-	4 h	-
Time required for complete drying 23 °C / 50% RH	-	24 h	-
Dry residue by mass	ISO 3251	65%	-
Dynamic viscosity	EN ISO 3219	48-72 Pa·s	-
Adhesion on concrete by direct traction	EN 1542	> 1 N/mm ²	145 lbf/in ²
Watertightness	EN 14891	conforming	-
Liquid water permeability (W)	EN 1062-3	< 0,1 kg/m ² ·h ^{0,5}	-
Water vapour transmission (Sd)	ISO 7783	< 5 m	> 0.7 US perm
Carbon dioxide permeability (C)	EN 1062-6	> 50 m	-
Application temperature	-	+5 / +35 °C	+41 / +95 °F
Storage temperature ⁽³⁾	-	≥ +5 °C	≥ +41 °F
VOC content	Dir. 2004/42/EC	0 g/L	-



HERMETIC FOAM

HIGH PERFORMING SOUNDPROOFING SEALING FOAM



CERTIFIED NOISE REDUCTION

Up to 63 dB noise reduction, certified by the IFT Rosenheim institution (ISO 10140-1).

AIRTIGHT EVEN AFTER TRIMMING

Waterproof and airtight, even if trimmed after hardening, thanks to the closed-cell structure.



ift-Nachweis		ift ROSENHEIM
Number	20-004738-PR10 (NW-K05-02-en-01)	Basis *) EN 12114:2000-03) and corresponding national versions (e.g. DIN EN) Test report: 20-004738-PR04 PB-K05-02-de-01
Owner	Rotho Blaas srl Via dell' Adige 2/1 I-39040 Cortaccia (BZ) Italy	
Product	Single-component polyurethane foam	Representation 
Designation	Shipping name: HERMETIC FOAM	
Details	Material: Polyurethane (PUR); Tested joint width 20 mm; Tested joint depth 60 mm	Instructions for use Testing of the product was determined in an "ideal" joint and in new condition based on DIN 18542, Clause 8.2 and 8.3. The results of the tested performance characteristics cannot be used as evidence of linear joints performed in practice.
Special features	The air tightness of the assembly foam was determined in an "ideal" joint and in a new state based on DIN 18542. The results cannot be used as proof of the air tightness of (foamed) component connection joints carried out in practice.	
Result	Air permeability according to EN 12114:2000-03  Air permeability in new condition a ≤ 0,1 m³/(m²h*daPa²/³)	Validity There is no time limit. When using this document the up-to-dateness of above basis and the conformity of the product have to be observed. The data and results given relate solely to the tested/described specimen.



SEALANTS



SOLUTION - TAPING

Presentation last saved: Just now



SUPPORTS

	ALL BAND	DOUBLE BAND	SEAL BAND SEAL SQUARE	EASY BAND	SPEEDY BAND	FLEXI BAND	FLEXI BAND UV	FACADE BAND UV	SOLID BAND	SMART BAND	PLASTER BAND	PLASTER BAND LITE	FRONT BAND UV Z10	TERRA BAND	EXPAND BAND	WINDOW BAND	FRAME BAND
membrane with top PP layer	●	●	●	●	●	●	●	●	●	●	●	●	●	●	●	●	●
membrane with top PE layer	●	●	●	●	●	●	●	●	●	●	●	●	●	●	●	●	●
membrane with top PA layer	●	●	●	●	●	●	●	●	●	●	●	●	●	●	●	●	●
membrane with top acrylate layer	●	●	●	●	●	●	●	●	●	●	●	●	●	●	●	●	●
bituminous membrane	●	●	●	●	●	●	●	●	●	●	●	●	●	●	●	●	●
membrane with top aluminised layer	●	●	●	●	●	●	●	●	●	●	●	●	●	●	●	●	●
timber	●	●	●	●	●	●	●	●	●	●	●	●	●	●	●	●	●
rough OSB	●	●	●	●	●	●	●	●	●	●	●	●	●	●	●	●	●
sanded OSB	●	●	●	●	●	●	●	●	●	●	●	●	●	●	●	●	●
plaster, concrete and bricks	●	●	●	●	●	●	●	●	●	●	●	●	●	●	●	●	●
plasterboard and plaster fibre	●	●	●	●	●	●	●	●	●	●	●	●	●	●	●	●	●
metal	●	●	●	●	●	●	●	●	●	●	●	●	●	●	●	●	●
timber fibre insulation	●	●	●	●	●	●	●	●	●	●	●	●	●	●	●	●	●
mineral wool insulation	●	●	●	●	●	●	●	●	●	●	●	●	●	●	●	●	●
polystyrene	●	●	●	●	●	●	●	●	●	●	●	●	●	●	●	●	●
PVC and plexiglass	●	●	●	●	●	●	●	●	●	●	●	●	●	●	●	●	●

- excellent adhesion
- guaranteed adhesion with a few precautions (clean surfaces, pre-treated with primer and/or suitable application temperatures)
- poor adhesion

PRIMER SPRAY

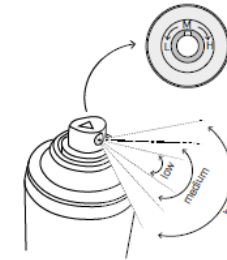
UNIVERSAL SPRAY PRIMER FOR ACRYLIC ADHESIVE TAPES

INSTANTANEOUS

Thanks to spray can application and the adjustable nozzle, no brushes or other equipment is needed for installation.

HIGH PERFORMANCE

At a distance of approx. 30 - 50 cm from the surface approx. 6 cm of attaching area is achieved. Ideal for use with Rothoblaas tapes.



EXAMPLES OF APPLICATIONS





BREATHABLE AND VAPOUR CONTROL SCREENS



Practical Training

1. Wider service penetrations – flexible, malleable butyl tape (BLACK BAND)
2. Single cable penetration- customisable EPDM profile (MANICA FLEX & FLEXI BAND)
3. Multiple cable penetration – flexible, butyl tape that can be plastered (MANICA PLASTER)
4. Joists on wall or in pocket and forming a corner - split back tapes, (SMART BAND and SEAL BAND)

1. Wider service penetrations – (BLACK BAND)

BLACK BAND

UNIVERSAL SINGLE-SIDED BUTYL TAPE



EXTRAORDINARY

Universal and expandable up to 300%, it effectively seals any crack on the most widely used construction materials.

PRACTICAL

Ideal for easy sealing on difficult nodes and very irregular surfaces; self-sealing even at low temperatures.

COMPOSITION

support
high density PE film

glue
black adhesive butyl compound

release liner
easy-release PP film



RECOMMENDATIONS FOR INSTALLATION

SEALING OF TECHNICAL INSTALLATIONS AND PASSAGES



TECHNICAL DATA

Properties	standard	value	USC conversion
Initial Tack	ASTM D 2979	8 N	1.8 lbf
Adhesion on steel at 180°	ASTM D 1000	20 N/cm	11.42 lbf/in
Maximum tensile force MD/CD	EN 12311-1	20/10 N/50 mm	2.28/1.14 lbf/in
Elongation at break point MD/CD	EN 12311-1	250/300 %	-
Temperature resistance	-	-30 / +90 °C	-22 / 194 °F
Application temperature	-	0 / +40 °C	+32 / 104 °F
Watertightness	-	conforming	-
Storage temperature ⁽¹⁾	-	+5 / +40 °C	+41 / 104 °F
Solvents	-	no	-
VOC emissions	ISO 16000	30 µg/m ³	-
French VOC classification	ISO 16000	A+	-

⁽¹⁾ Store the product in a cool, dry place for no more than 12 months.
Waste classification (2014/955/EU): 08 04 10.

2. Single cable penetration

MANICA FLEX

SEALING SLEEVE FOR CONDUIT AND CABLE PASSAGE

COMPLETE RANGE

Available in several variants to ensure tightness in different situations. Available in both sealable TPU and EPDM.

HERMETIC

Ensures airtightness and watertightness for cables and other pass through elements.




COMPOSITION

MANICA FLEX - EPDM

Extruded compact EPDM

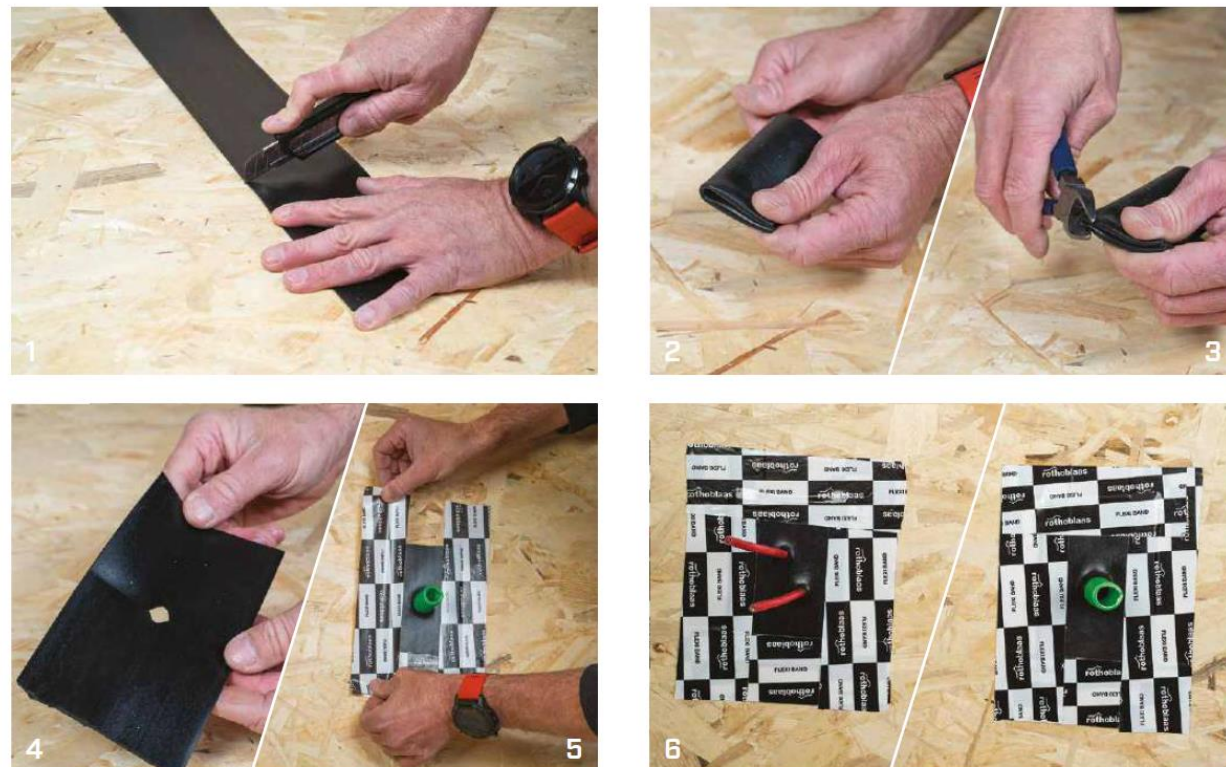
CODES AND DIMENSIONS

MANICA FLEX - EPDM

CODE	B [mm]	s [mm]	L [m]	B [in]	s [mil]	L [ft]	
MANFEPDM100	100	1	10	3.9	39	33	1
MANFEPDM150	150	1	10	5.9	39	33	1

RECOMMENDATIONS FOR INSTALLATION

MANICA FLEX - EPDM: SEALING OF CABLES AND CORRUGATED TUBES THROUGH PIPES



MANICA PLASTER

ADHESIVE SEALING SLEEVE THAT CAN BE PLASTERED

CAN BE PLASTERED

The butyl compound is covered with a polypropylene fabric that can be plastered.

SPECIAL BUTYL MIX

Thanks to its special modified butyl formulation, it ensures excellent durability even when subjected to thermal stress.

COMPOSITION

support
non-woven PP fabric

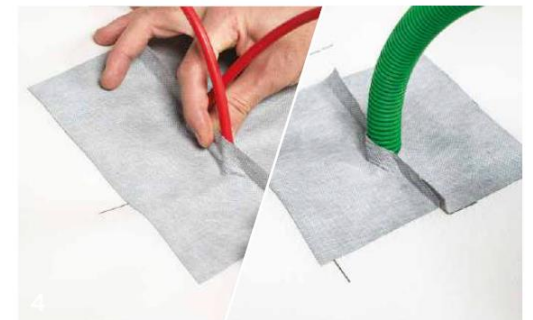
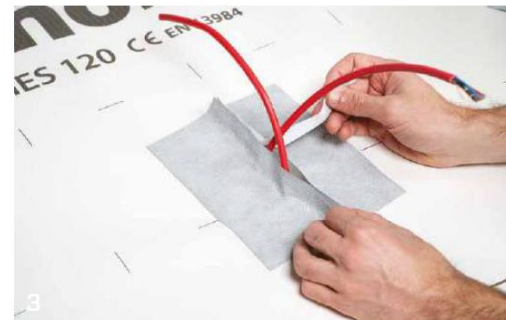
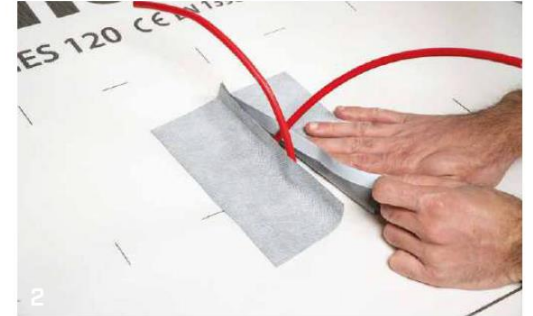
glue
grey adhesive butyl compound

release liner
PP film



RECOMMENDATIONS FOR INSTALLATION

SEALING OF CABLES AND CORRUGATED THROUGH PIPES



TECHNICAL DATA

Properties	standard	value	USC conversion
Initial Tack	ASTM D 2979	8 N	-
Reaction to fire	EN 13501-1	class E	-
Temperature resistance	-	-30 / +90 °C	-22 / +194 °F
Application temperature	-	0 / +40 °C	+32 / +104 °
Storage temperature ⁽¹⁾	-	+5 / +40 °C	+41 / +104 °
Solvents	-	no	-
VOC emissions	ISO 16000	30 µg/m ³	-
French VOC classification	ISO 16000	A+	-

⁽¹⁾Store the product in a cool, dry place for no more than 12 months.
Waste classification (2014/955/EU): 08 04 10.

4 Joists on wall or in pocket – and forming a corner

SEAL BAND | SEAL SQUARE

SINGLE-SIDED TAPE FOR INDOOR USE



EFFECTIVE

The pre-shapeable carrier allows efficient sealing of concave or convex corners and edges.

SQUARE VERSION

Ideal for small point seals or holes for the blowing technique, where precision is required.

COMPOSITION

- support
paper reinforced with protective film
- glue
acrylic dispersion without solvents
- release liner
silicone coated paper



SMART BAND

UNIVERSAL SINGLE-SIDED TAPE WITH SEPARABLE LINER



SPECIAL LINER

The product has a unique separating film which, thanks to a special treatment, can be divided at any point without pre-cutting, thus adapting to any installation requirement.

FLASHING TAPE

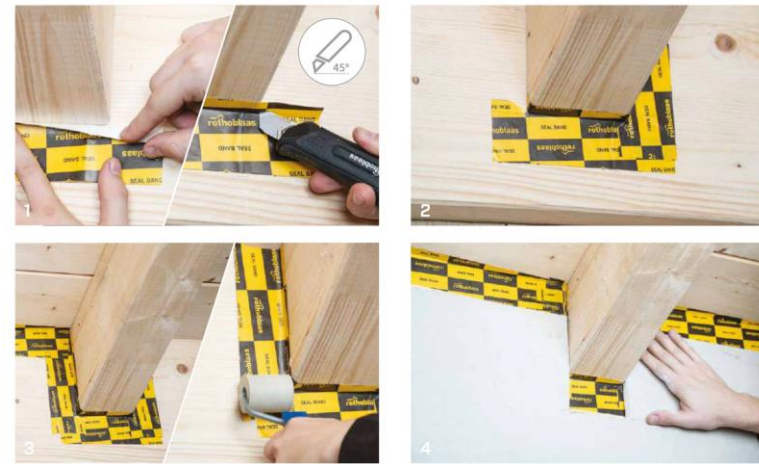
It meets all the requirements to be classified as a tape for sealing external doors or windows, ensuring maximum safety even in case of stagnating water.

COMPOSITION

- support
PE special film
- support
UV-stabilised PE film
- glue
acrylic dispersion without solvents
- release liner
PP film with easy splitting



BEAM SEAL DETAIL



- 1 MARLIN CUTTER
- 3 ROLLER

RECOMMENDATIONS FOR INSTALLATION

CORNER DETAIL





Thank you for your attention

Peter Theobald

Peter.theobald@rothoblaas.com